

State of Wyoming Corner Record

(In compliance with the CORNER PERPETUATION AND FILING ACT, Wyoming Statutes, 1997 Section 33-29-140 et. seq., and the Rules and Regulations of the Board of Professional Engineers and Professional Land Surveyors)

Reverse side of this form may be used if more space is needed.

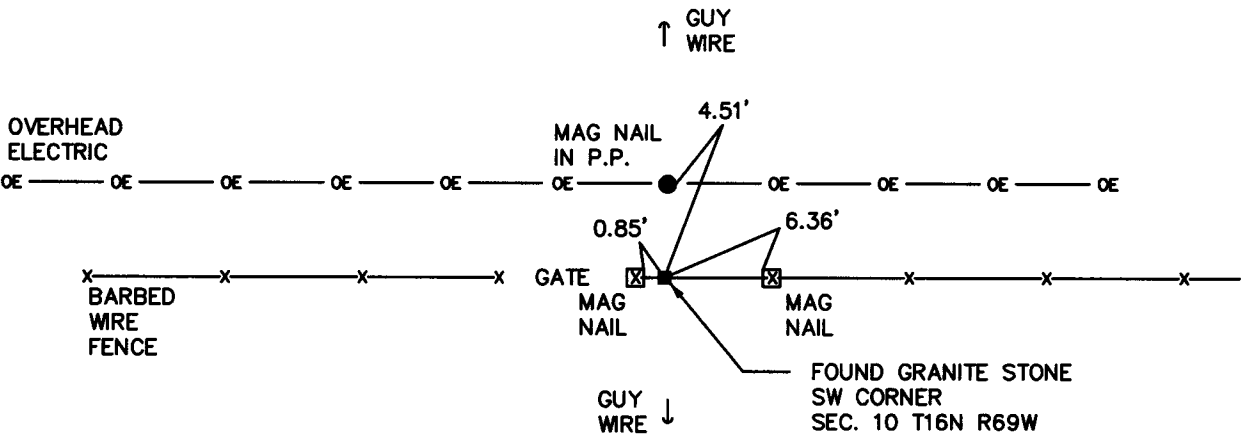
Record of original survey and citation of source of historical information (if corner is lost or obliterated). Description of corner monumentation evidence found and/or monument and accessories established to perpetuate the location of this corner. Sketch of relative location of monument, accessories, and reference points with course and distance to adjacent corner(s) (if determined in this survey). Method and rationale for reestablishment of lost or obliterated corner.

RECORD: SET A GRANITE BOULDER 15 X 10 X 6 FOR CORNER TO SECTIONS 9, 10, 15 & 16.

MONUMENT FOUND: FOUND A 13" X 6" GRANITE STONE PROJECTING 0.2' ABOVE GROUND SURFACE WITH NO VISABLE MARKINGS. STONE IS WELL SET. ACCEPTED AS ORIGINAL.

MONUMENT SET: NOTHING SET.

REFERENCES: STONE LIES IN A E-W BARBED WIRE FENCE AND 4' SOUTH OF A E-W OVERHEAD ELECTRIC LINE. SET MAG NAILS FOR REFERENCE.



RECP #: 651832

RECORDED 12/23/2014 AT 4:13 PM BK# 2422 PG# 308
Debra K. Lathrop, CLERK OF LARAMIE COUNTY, WY PAGE 1 OF 1

Date of Field Work: 8/31/10

Office Reference: 08900

Monument Inscription

Cross Index Plat

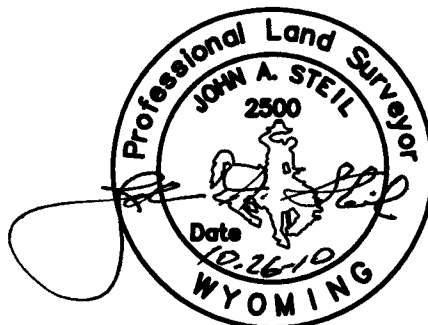
	1	2	3	4	5	6	7	8	9	10	11	12	13	14	15	16	17	18	19	20	21	22	23	24	25		
A		+	+	+	+	+	+	+	+	+	+	+	+	+	+	+	+	+	+	+	+	+	+	+	+		A
B		+	+	+	+	+	+	+	+	+	+	+	+	+	+	+	+	+	+	+	+	+	+	+	+		B
C		+	6	+	5	+	+	+	4	+	+	+	3	+	+	+	2	+	+	1	+	+	+	+	+		C
D		+	+	+	+	+	+	+	+	+	+	+	+	+	+	+	+	+	+	+	+	+	+	+	+		D
E		+	+	+	+	+	+	+	+	+	+	+	+	+	+	+	+	+	+	+	+	+	+	+	+		E
F		+	+	+	+	+	+	+	+	+	+	+	+	+	+	+	+	+	+	+	+	+	+	+	+		F
G		+	7	+	8	+	+	+	9	+	+	+	10	+	+	+	11	+	+	12	+	+	+	+	+		G
H		+	+	+	+	+	+	+	+	+	+	+	+	+	+	+	+	+	+	+	+	+	+	+	+		H
J		+	+	+	+	+	+	+	+	+	+	+	+	+	+	+	+	+	+	+	+	+	+	+	+		J
K		+	+	+	+	+	+	+	+	+	+	+	+	+	+	+	+	+	+	+	+	+	+	+	+		K
L		+	18	+	17	+	+	+	16	+	+	+	15	+	+	+	14	+	+	13	+	+	+	+	+		L
M		+	+	+	+	+	+	+	+	+	+	+	+	+	+	+	+	+	+	+	+	+	+	+	+		M
N		+	+	+	+	+	+	+	+	+	+	+	+	+	+	+	+	+	+	+	+	+	+	+	+		N
O		+	+	+	+	+	+	+	+	+	+	+	+	+	+	+	+	+	+	+	+	+	+	+	+		O
P		+	19	+	20	+	+	+	21	+	+	+	22	+	+	+	23	+	+	24	+	+	+	+	+		P
Q		+	+	+	+	+	+	+	+	+	+	+	+	+	+	+	+	+	+	+	+	+	+	+	+		Q
R		+	+	+	+	+	+	+	+	+	+	+	+	+	+	+	+	+	+	+	+	+	+	+	+		R
S		+	+	+	+	+	+	+	+	+	+	+	+	+	+	+	+	+	+	+	+	+	+	+	+		S
T		+	30	+	29	+	+	+	28	+	+	+	27	+	+	+	26	+	+	25	+	+	+	+	+		T
U		+	+	+	+	+	+	+	+	+	+	+	+	+	+	+	+	+	+	+	+	+	+	+	+		U
V		+	+	+	+	+	+	+	+	+	+	+	+	+	+	+	+	+	+	+	+	+	+	+	+		V
W		+	+	+	+	+	+	+	+	+	+	+	+	+	+	+	+	+	+	+	+	+	+	+	+		W
X		+	31	+	32	+	+	+	33	+	+	+	34	+	+	+	35	+	+	36	+	+	+	+	+		X
Y		+	+	+	+	+	+	+	+	+	+	+	+	+	+	+	+	+	+	+	+	+	+	+	+		Y
Z		+	+	+	+	+	+	+	+	+	+	+	+	+	+	+	+	+	+	+	+	+	+	+	+		Z
	1	2	3	4	5	6	7	8	9	10	11	12	13	14	15	16	17	18	19	20	21	22	23	24	25		

Firm/Agency, Address

STEIL SURVEYING SERVICES LLC
1102 WEST 19th STREET
CHEYENNE WY 82001
 Telephone Number: **(307) 634-7273**

This corner record was prepared by me or under my direction and supervision.

SEAL & SIGNATURE



Corner Name SW CORNER Section 10, T 16 N, R 69 W, 6th P.M.

Cross-Index No.: J-13

County: LARAMIE Wyoming

SBRPEPLS/PLSW: March 1994; PLSW January 1998